



REMOTE ACCESS TO MACHINES

A hit also in fresh-cut industry

RADIO DATA TRANSMISSION IN FRESH-CUT MACHINES

The **TOSIBOX®** is integrated into the control cabinet of various machine types from Kronen to establish a remote access system.

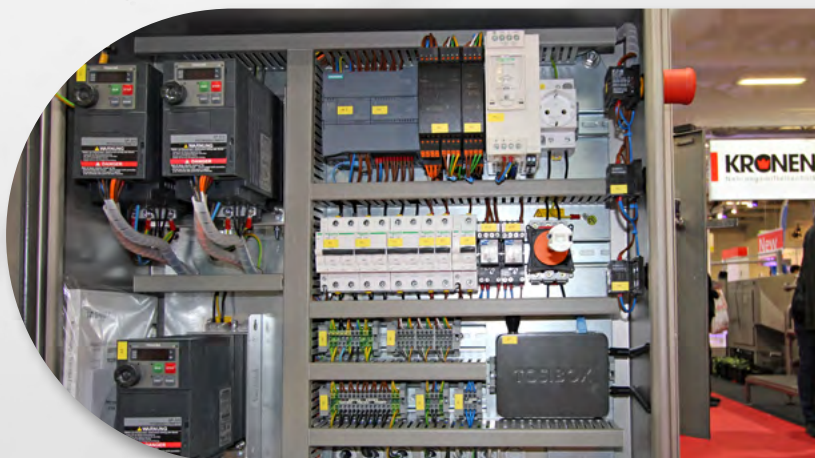


1

Via a **TOSIBOX®** Key or Mobile Client the secure and easy access to the machine is possible from everywhere. Settings and adjustments in the machine program can be realised anytime.

2

The **TOSIBOX®** Lock is built inside the control cabinet to establish the secure remote access to the machine. The connection can be set via Ethernet, WLAN or a cellular modem.





APPLICATION

Demand for fresh, ready-to-cook fruit, vegetable and salad mixes is constantly rising, so that with 10 to 15% per year this "fresh-cut" food product group is achieving strong growth. They are usually produced by special machines which wash, peel, cut, sterilize etc. raw products and finally pack them. These machines feature highly modern control units and – for flexible set-up for certain work processes or product batches – are capable of parametrization. This requires the operator to have a certain degree of technical education, which by small companies cannot always be guaranteed. This fact has caused machine manufacturers such as German [Kronen GmbH](#) to equip their machinery with machine remote access, enabling parametrization of globally installed machines as well as their remote maintenance by the machine manufacturer or another professionally competent partner (e.g. service provider). A prerequisite for this attractive business model is a globally applicable and extremely reliable man-machine communication link. This is where the radio specialist [Schildknecht AG](#) having been dealing in this field for 35 years provides a particularly powerful solution for.



CHALLENGES

The particular challenges for this solution arise from the frequently very rough installation environment of food machinery (temperature, humidity, aggressive cleansing agents and the like) as well as from the frequently insufficient educational level of the operating staff on the one hand and the stringent purity requirements of food legislation on the other hand. Therefore, remote access to machinery must meet highest demands with regard to its global availability and operational safety and additionally – in view of high intensity of competition regarding foodstuff – be feasible at low costs. The solution of [Schildknecht AG](#) described in the following complies with these requirements as shown by latest practical experience.



SOLUTION

In close cooperation with the machine manufacturer [Kronen GmbH](#), their machines have been and are enabled for remote access by Schildknecht by applying [TOSIBOX®](#). The product is predominantly applied successfully for Kronen machines, pineapple and melon peeling machine AMS 220, UVC Lock, Multicorer and the latest washing machine GEWA XL. [TOSIBOX®](#) is a globally patented Plug & Go™ technology and allows hardware-based, very easy installation of safe connections between network-compatible devices. Machine manufacturers but also energy providers or in general companies of industrial automation therewith obtain remote access to their machinery and devices in worldwide use for the purpose of remote maintenance up to remote control. The technology also allows connection establishment by the operator who thereby at the same time gives his consent for communication. Thanks to an intelligent cryptographic technique called [TOSIBOX®](#) key technology, connections established this way are particularly safe. The solution described also allows to easily establish safe M2M connections as well as increasingly solutions in the field of Industrie 4.0.



RESULT

Together with their partner Tosibox and the [TOSIBOX®](#) product series [Schildknecht AG](#) provides an important contribution to high availability and optimal use and thereby efficiency of globally installed machines by means of remote access, even via mobile devices. This is substantiated impressively by comments of [Kronen GmbH](#):

"Applying Tosibox in control units of our machines is mandatory; we are highly impressed by the remarkably easy installation, compact construction and the key encryption principle".

Eric Lefebvre (Technical Manager), Kronen GmbH.

[SEND INQUIRY NOW](#)

